

Emergency Action Plan

for



PENN FOREST STREAMS

11 Clubhouse Road

Jim Thorpe, PA 18229

Phone: 570-352-2458

E-mail: office@pfspoa.org

www.pfspoa.org

Revised: April 09, 2020

Emergency Action Plan

(Please keep this information in a handy location and refer to it if a situation arises)

LOCAL EMERGENCY PHONE NUMBERS

FIRE

PENN FOREST TOWNSHIP	911
----------------------	-----

POLICE

STATE POLICE (FERN RIDGE)	570-646-2271
---------------------------	--------------

STATE POLICE (LEHIGHTON)	610-377-4270
--------------------------	--------------

<u>AMBULANCE/FIRE</u>	911	570-325-9111
-----------------------	-----	--------------

MEDICAL

PENN FOREST TOWNSHIP AMBULANCE	911
--------------------------------	-----

ST LUKES HOSPITAL	610-377-1300
-------------------	--------------

LEHIGH VALLEY POCONO	570-421-4000
----------------------	--------------

MEDIVAC HELICOPTER	800-322-9599
--------------------	--------------

SECURITY

PENN FOREST STREAMS	570-650-2437
---------------------	--------------

<u>AGENCY</u>	<u>CONTACT NAME</u>	<u>TELEPHONE NUMBER</u>
DCNR Bureau of Forestry Penn Forest Fire Control Station	Wesley M. Keller Forest Fire Specialist	570-325-6111 Office
Penn Forest Fire Dept. Company #1	Chief Bruce Miller Fire Chief	570-325-4203 Station 570-325-4053
Carbon County EMA Emergency Management	Mark S. Nalesnik Coordinator	570-325-3097 Office 911 Emergency
Penn Forest Township	William Gibson EMA Coordinator	570-325-2768 Office 570-657-1399 Cell

Contact information

**Pennsylvania Power & Light (PPL)
(For Power outages)
1-800-DIAL-PPL**

**Penn Forest Stream Office
1-570-325-2458**

**WILD LAND/URBAN INTERFACE
EMERGENCY ACTION PLAN
FOR
PENN FOREST STREAMS DEVELOPMENT**

1. PURPOSE AND SCOPE

- A. To safeguard the lives and property of residents of the PENN FOREST STREAMS Development from wild land fires.
- B. To provide for effective warning and notification to residents in the event an evacuation of all or portion of the development becomes necessary.
- C. To assign emergency actions to be taken by the development, residents, public officials, and emergency personnel in the event of a wild land fire.
- D. To provide basic guidelines for an effective mitigation/prevention program for the development residents.

2. SITUATION

- A. PENN FOREST STREAMS is a private community covering approximately 720 acres of wood land.
- B. The community is located on State Route 903, 7 miles east of the town of Jim Thorpe, and 10 miles west of the intersection of S.R. 903 and S.R. 115.
- C. State Game Land Number 141 borders the development on the west, Weiser State Forest on the east. Privately owned forest and development is located to the north and south.
- D. Within the affected area, there are 460 homes and 269 lots,
- E. PENN FOREST STREAMS development is divided by S.R. 903 and Township roads, as well as power transmission lines.

3. PREPAREDNESS

- A. Establish and/or review mutual aid agreements and service contracts.
- B. Participate in the Incident Command structure.
- C. Identify known hazards and corrective measures for those hazards.
- D. Provide year-round fire watch and hazard patrol by security staff, augmented by crime watch resident members and other residents, and persons travelling within our confines.

4. LEVEL OF AWARENESS

A. Normal Conditions

- 1. Snow cover during winter months.
- 2. Average precipitation throughout the year.
- 3. Green-up from mid-June to fall.

B. Increased Fire Danger

- 1. Lack of snow cover during winter months.
- 2. Below normal precipitation, especially from mid-March to mid-June.
- 3. Above normal temperatures.
- 4. Low humidity.

5. Increase in daylight hours.
6. Increase in winds.
7. Increased human outdoor activity.
8. Open burnings

C. Return to Normal Conditions

1. Green-up, Vegetation or tree canopy is developed enough to retain moisture on the forest floor
2. Significant decrease in fire activity
3. Return to normal precipitation levels

5. NOTIFICATION

- A. A person/s discovering a fire shall IMMEDIATELY initiate a warning to CARBON COUNTY COMMUNICATION CENTER OR 911
- B. The CARBON COUNTY dispatch center will then notify all appropriate emergency responders

6. WARNING

- A. When a report of a wildfire in PENN FOREST STREAMS development is received by the CARBON COUNTY dispatch center they will initiate the following warning notifications:
 1. Dispatch of the PENN FOREST FIRE DEPARTMENT, DISTRICT
 2. Notification of the DCNR Bureau of Forestry headquarters in CRESSONA AND PENN FOREST FIRE CONTROL STATION

7. EVACUATION

- A. When notified by the appropriate fire officials that an evacuation of all or a portion of the development is either possible or necessary, the CARBON COUNTY EMERGENCY MANAGEMENT AGENCY will initiate the Emergency Alert System (EAS) and begin public advisory announcements
- B. The affected municipal emergency management personnel will supplement the county EAS warning with route alerting as per the Evacuation Annex of the PENN FOREST Emergency Operation Plan
- C. Emergency road gate to be open/unlocked at Reservoir Road and Panther Run

8. RESPONSIBILITIES AND DUTIES – EMERGENCY RESPONSE

A. PENN FOREST STREAMS

1. Provide for a daily review of potential wildfire conditions during periods of high danger such as droughts, limited rainfall or prolonged low humidity
2. The current “FIRE DANGER” index shall be obtained weekly from the DCNR Bureau of Forestry headquarters and displayed at a conspicuous location/s in the community (currently at 890 Route 903).
3. Safety & Security Director or their delegate will be the liaison to represent the development at unified command post

B. CARBON COUNTY COMMUNICATION CENTER

1. The CARBON COUNTY dispatch center will dispatch the appropriate emergency services in accordance with dispatch protocols in place at time of receipt of emergency call. This may include but is not limited to the following:
 - a. Fire Department
 - b. Ambulance
 - c. Police

2. The CARBON COUNTY dispatch center will also make the following notifications when advised by the Incident Commander that this EAP is being activated:
 - a. DCNR Bureau of Forestry
 - b. CARBON County EMA

C. FIRE SERVICES

1. Fire Officer on scene first will initiate the following actions:
 - a. Initiate the Incident Command System
 - b. Provide situation size-up
 - c. Begin suppression activities

2. If situation warrants activation of the EAP, the Incident Commander should implement the following steps:
 - a. Request necessary mutual aid
 - b. Confirm notification has been made with DCNR Bureau of Forestry
 - c. Designate location of Command Post
 - d. Establish resource staging area
 - e. Coordinate fire ground communication plan with dispatch center

D. Carbon County Emergency Management Agency

1. Participate in Incident Command system
2. Contact the following personnel and agencies:
 - a. PENN Forest Emergency Management Coordinator/s
 - b. Adjacent County Emergency Management Agencies (if applicable)
 - c. At risk facilities such as schools, daycare centers, nursing homes, etc. within the affected area
 - d. Appropriate elected officials
 - e. County Emergency Management Agency
 - f. PA Emergency Management Agency
 - g. American Red Cross if mass care sheltering is needed
 - h. Media (for advisory and warning)
 - i. PA Department of Transportation
3. Initiate Damage Assessment and Recovery procedures as per Carbon County Emergency Operation Plan
4. Coordinate resource management for incident

E. MUNICIPAL EMERGENCY MANAGEMENT AGENCY

1. Participate in Incident Command System
2. Provide representative to unified command post
3. Coordinate implementation of appropriate sections of municipal Emergency Operations Plan, especially evacuation annex as requested by the incident commander
4. Provide timely notification and briefings to municipal elected officials

F. DCNR – BUREAU OF FORESTRY

1. Provide timely response to emergency situation
2. Participate in Incident Command System and provide liaison to unified command post
3. Assess fire weather information and conditions
4. Provide specialized fire suppression and direction through IC
5. Provide specialized fire suppression crews
6. Provide specialized resources such as air tanker and heavy equipment
7. Implement mutual aid fire compact as needed
8. Provide wildfire investigation
9. Prepare fire report

G. POLICE SERVICES (Pennsylvania State Police)

1. Provide timely response to emergency situations
2. Participate in Incident Command System and provide liaison to unified command post
3. Assist with route alerting as required
4. Establish evacuation Traffic Control Points as per municipal Emergency Operations Plan
5. Establish Traffic Access Control Points as per municipal Emergency Operations Plan

H. EMERGENCY MEDICAL SERVICES (Lehighon Ambulance/Penn Forest Station)

1. Provide timely response to emergency situations
2. Assist with evacuation of special needs and mobility impaired resident as per municipal Emergency Operations Plan
3. Provide EMS support to mass care facilities
4. Establish responder rehabilitation station

I. AMERICAN RED CROSS (of the Poconos 570-476-3800 or for fire call center 800-422-7677)

1. Upon request of CARBON county EMA implement mass care shelter annex of County Emergency Operations Plan and provide staffing and support for required mass care shelters for duration of the incident
2. Establish and maintain contact with unified command post

J. DEPARTMENT OF TRANSPORTATION

1. Participate in Incident Command System and provide liaison to unified command post
2. Provide traffic services, directional signs, etc. as requested in support of evacuation and traffic detours around incident

9. ADMINISTRATION AND LOGISTICS

A. Copies of the plan will be available for inspection at the following locations:

1. Carbon County EMA
2. Penn Forest Township Building
2. Penn Forest Streams Administrative Office
3. Penn Forest Streams Security Office
4. PFSPOA website: <http://www.pfspoa.org>

10. AUTHORITY AND REFERENCES

A. Authority

1. Act 1995-19 Chapter 3, Section 30 1(d)(1)
2. Emergency Management Services Code, 35 Pa. C.S Section 7101 et seq-as amended
3. References

B. County Emergency Operations Plan

1. Municipality Emergency Operations Plan
2. 1991 National Fire Codes N. F. P. A. #299 Protection of Life and Property from Wildfire
National Fire Protection Association

11. DEFINITIONS

A. Access Control Point (ACP) - Manned posts established by authorized personnel on roads around the perimeter of an event for the purposes of controlling access into the area

B. Incident Command System (ICS) – Flexible, Emergency Management system of procedures for controlling personnel, facilities, equipment, and communications so that all involved agencies can work together toward a common goal in an effective and efficient manner

C. Mitigation – The process of causing a situation to become less severe, harsh, or hostile

D. Reception Center – A site outside the affected area through which evacuees needing mass care pass to obtain information and directions to mass care centers

E. Resident Pick-up Point – Pre-established locations within the affected area where persons requiring transportation out of the area to mass care centers can obtain rides via pre-arranged means

F. Traffic Control Point (TCP) – Manned post established at critical road intersections

G. Wildland Fire – An uncontrolled fire spreading through combustible fuels, exposing and possibly consuming structures

H. Fire Danger Ratings System – A system used by DCNR Bureau of Forestry to establish a daily index of potential wildfire danger based on weather and fuel conditions

I. Unified Command Post – Area where officials from involved agencies and government officials jointly plan and implement strategy

J. Wildland/Urban Interface – Any area where potentially dangerous combustible wildland fuels are found adjacent to combustible homes and other structures. A zone where man made improvements intermix with the wildland fuels

12. EXERCISE AND TRAINING

A. Penn Forest Streams will develop an exercise and training drill plan on a yearly basis.

13. PLAN MAINTENANCE

A. This plan will be reviewed by the association every two years. All minor changes such as telephone numbers and addresses shall be made as they are discovered. Any such changes should be immediately sent to all holders of the plan.

B. During the two year review:

1. The association in conjunction with the DCNR Bureau of Forestry will review the potential hazard/affected area for any changes in status.

2. The DCNR Bureau of Forestry will review and revise the Levels of Awareness as warranted

3. The association will coordinate with the County EMA if population increases within the designated area. This increase will affect the emergency response capabilities.

Appropriate changes will then be made to the plan.

4. The association will obtain concurrence from emergency response agency officials attesting to their continued understanding of their roles in the plan.

5. The association will distribute updated plan information to all plan holders within 30 days of the plan review.

C. Action Plan:

1. Continue Fire Watch and Hazard patrol year-round.

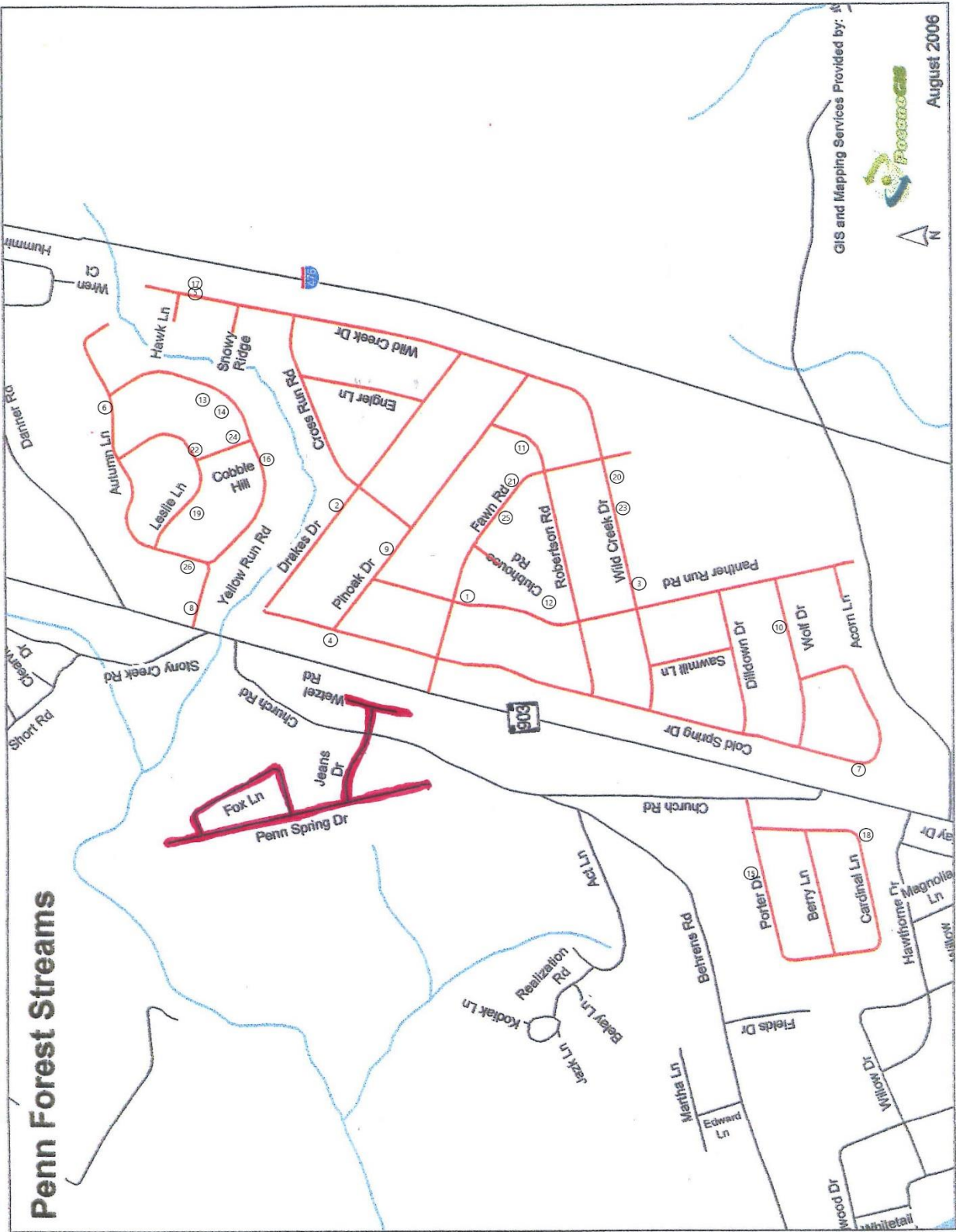
2. All Board Members and additional volunteers will be on Firewise committee for development.

3. All security personnel, maintenance personnel and crime watch members will be on Firewise committee.

4. The Penn Forest Streams POA Annual Meeting in July shall include Firewise representatives from State, County, Township and Penn Forest Fire Department as guest speakers (if/when available)

5. The Penn Forest Streams POA Annual Picnic held subsequent to General POA meeting is hereby designated as Firewise Day.

**ATTACHMENT A
POTENTIAL HAZARD and FIRE AREA MAPS
FOR
PENN FOREST STREAMS**



**ATTACHMENT B
 PENN FOREST STREAMS
 COMMUNITY DETAIL MAP**

